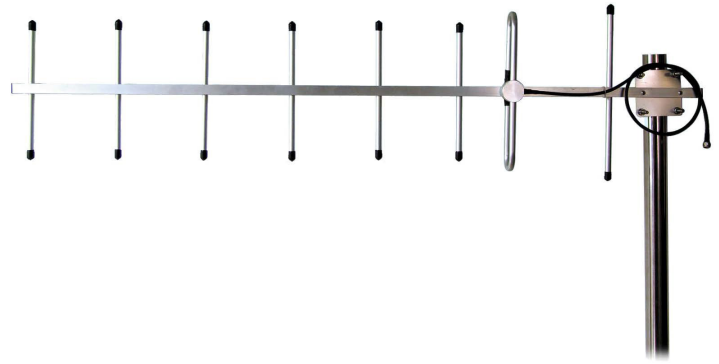


GUARDIAN



TQ-DONOR-UHF UHF Band Donor Antenna

Installation

1. Install U-Bolt on Antenna, install flat washer, split washer and nut.
2. Slide antenna and U-Bolt to desired location of the pole.
3. Point the antenna towards the nearest cellular tower.
4. Hand tighten the nut of the U-Bolt.

Technical Specifications

Model #	TQ-DONOR-UHF-450-470-11	TQ-DONOR-UHF-470-490-11	TQ-DONOR-UHF-490-512-11
Frequency	450-470 MHz	470-490 MHz	490-512 MHz
Elements	8	8	8
Gain	11	11	11
Bandwidth	20 MHz	20 MHz	20 MHz
Horizontal beam width	44°	44°	44°
Vertical beam width	40°	40°	40°
VSWR	≤1.8:1	≤1.8:1	≤1.8:1
Front to Back Ratio	≥16 dB	≥16 dB	≥16 dB
Polarization	Vertical or Horizontal	Vertical or Horizontal	Vertical or Horizontal
Max Input Power	100 W	100 W	100 W
Impedance	50 Ω	50 Ω	50 Ω
Connector	N-Female	N-Female	N-Female
Dimension	1.06 m/ 41.7 inch	1.05 m/ 41.3 inch	1.00 m/ 39.3 inch
Wind Velocity Rating (MPH)	134 MPH	134 MPH	134 MPH

Note:

Antenna may be installed on a variety of pipe angles. Ensure that the antenna is pointing in the direction of the closest cellular tower, and is vertical with the drip hole at the bottom.

Ordering Information

Model	Description	Stock No.
TQ-DONOR-UHF-450-470-11	Outdoor, Yagi Directional Antenna, 50 ohm, 11 dBi, 450-470 MHz, 100 W	3996156
TQ-DONOR-UHF-470-490-11	Outdoor, Yagi Directional Antenna, 50 ohm, 11 dBi, 470-490 MHz, 100 W	3996157
TQ-DONOR-UHF-490-512-11	Outdoor, Yagi Directional Antenna, 50 ohm, 11 dBi, 490-512 MHz, 100 W	3996158