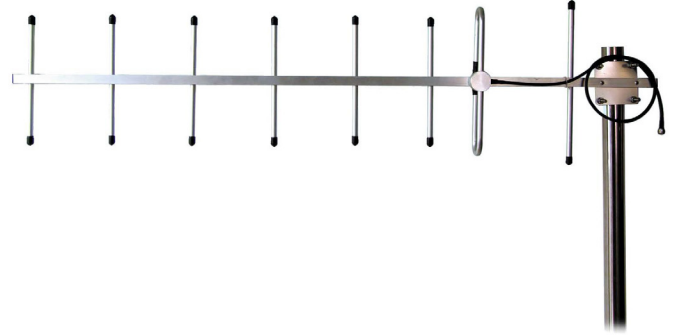


Features

- UHF Band Coverage (450–512 MHz)
- High Gain: 11 dBi
- Directional Yagi Design for Long-Range Reception
- Narrow Beam Width (44° Horizontal / 40° Vertical)
- Dual Polarization: Vertical or Horizontal
- 50 Ω Impedance
- Rated for Harsh Environments (134 MPH Wind Velocity)
- N-Female Connector



Description

The DONOR-UHF-YAGI is a high-gain outdoor directional antenna designed to cover UHF frequencies in the 450–512 MHz range. Available in three tuned models (450–470, 470–490, and 490–512 MHz), the antenna delivers 11 dBi gain and is ideal for applications requiring long-range signal pickup, such as donor antenna installations in distributed antenna systems (DAS). The rugged construction and narrow beam width ensure optimized performance in outdoor environments. It supports either vertical or horizontal polarization and includes N-Female connectors for easy integration.

Install Guidelines

1. Install U-Bolt on Antenna, install flat washer, split washer and nut.
2. Slide antenna and U-Bolt to desired location of the pole.
3. Point the antenna towards the nearest cellular tower.
4. Hand tighten the nut of the U-Bolt.

Technical Specifications

Model Number	DONOR-UHF-450-470-11	DONOR-UHF-470-490-11	DONOR-UHF-490-512-11
Frequency	450-470 MHz	470-490 MHz	490-512 MHz
Elements	8	8	8
Gain	11	11	11
Bandwidth	20 MHz	20 MHz	20 MHz
Horizontal beam width	44°	44°	44°
Vertical beam width	40°	40°	40°
VSWR	≤1.8:1	≤1.8:1	≤1.8:1
Front to Back Ratio	≥16 dB	≥16 dB	≥16 dB
Polarization	Vertical or Horizontal	Vertical or Horizontal	Vertical or Horizontal
Max Input Power	100 W	100 W	100 W
Impedance	50 Ω	50 Ω	50 Ω
Connector	N-Female	N-Female	N-Female
Dimension	1.06 m/ 41.7 inch	1.06 m/ 41.7 inch	1.06 m/ 41.7 inch
Wind Velocity Rating (MPH)	134 MPH	134 MPH	134 MPH

Note: Antenna may be installed on a variety of pipe angles. Ensure that the antenna is pointing in the direction of the closest cellular tower, and is vertical with the drip hole at the bottom.

Ordering Information

<i>Model Number</i>	<i>Description</i>	<i>Stock No.</i>
DONOR-UHF-450-470-11	Outdoor, Yagi Directional Antenna, 50 ohm, 11 dBi, 450-470 MHz, 100 W	3996156
DONOR-UHF-470-490-11	Outdoor, Yagi Directional Antenna, 50 ohm, 11 dBi, 470-490 MHz, 100 W	3996157
DONOR-UHF-490-512-11	Outdoor, Yagi Directional Antenna, 50 ohm, 11 dBi, 490-512 MHz, 100 W	3996158